

# COMMUNITY NEWSLETTER



OCTOBER 2023

## Message from

**ALIX DRAPACK**

**Vice President ESG**

Patriot Battery Metals is a hard-rock lithium exploration company committed to responsible and sustainable development of its flagship Corvette Project.

We have recently put together an ESG department responsible for the sound environmental management of site activities and for maintaining open communication channels with local communities.

This is the first community newsletter and we intend to publish it quarterly to inform stakeholders on the Corvette Project progression, on the mining industry generally and on our community activities. Our objective is to communicate with you effectively and address any concerns or inquiries you might have about our ongoing exploration activities and future development plans.

We are committed to working with you in the next months and years to create mutual benefits of economic and social growth, employment opportunities and environmental protection as we develop the lithium industry in the Eeyou Istchee James Bay region.

Your feedback, participation and support are essential to us. Please contact us to share your thoughts and to find out how you can get involved.

Sincerely,

*Alexandra Drapack*

**ÈVA ROY-VIGNEAULT**

**Principal Community Relations & ESG**



Èva and Alix  
James Bay near Chisasibi.

I welcome the opportunity to listen to our neighbours and stakeholders with an interest in our exploration activities.

Please contact me with any questions, comments or concerns related to Patriot Battery Metals or our projects.

To get in touch: [eroy@patriotbatterymetals.com](mailto:eroy@patriotbatterymetals.com)

I'm looking forward to hearing from you!

*Èva Roy-Vigneault*



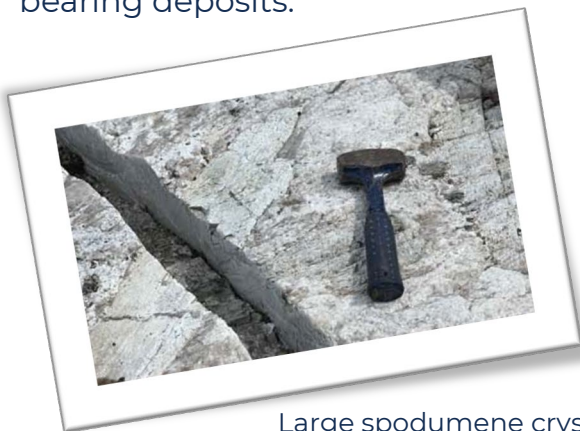
# Corvette

## HARD-ROCK LITHIUM

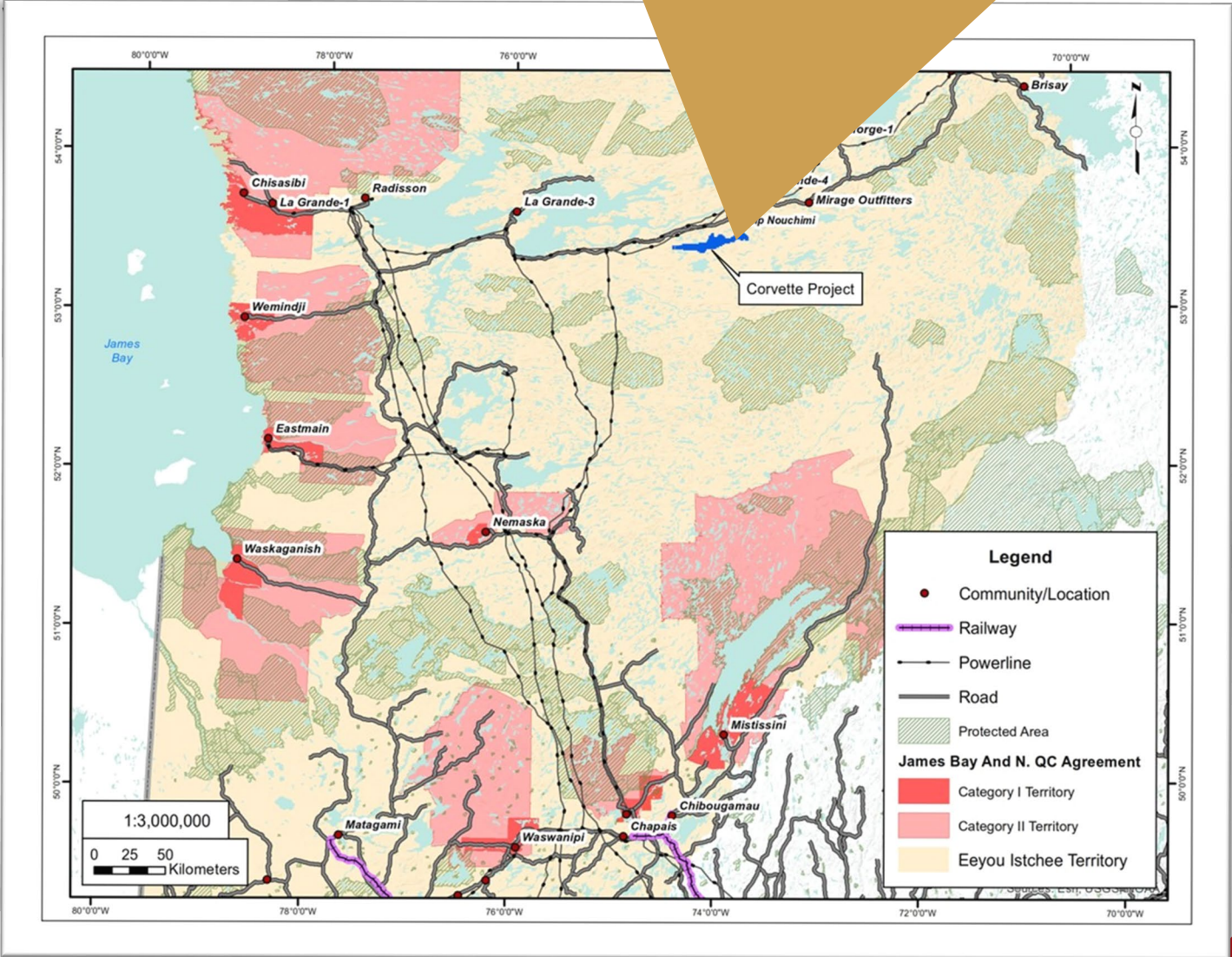
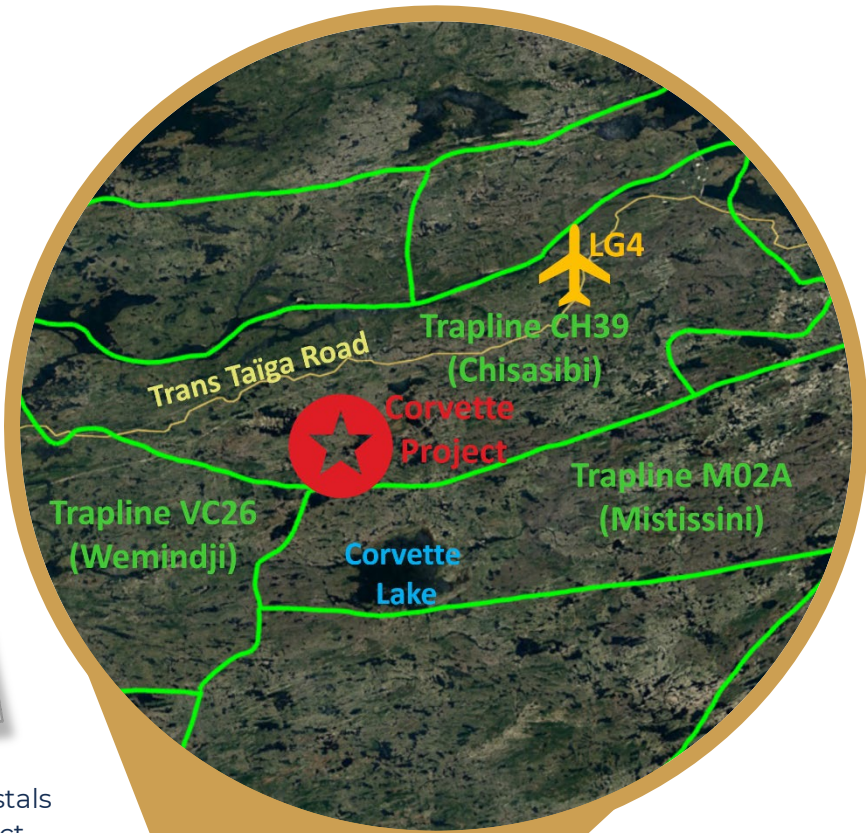
### In Eeyou Istchee James Bay

#### LOCATION

Situated within the Eeyou Istchee James Bay territory, on trapline CH39 of the Cree Nation of Chisasibi, the Corvette Project hosts significant mineral potential. Exploration activities are focused on finding lithium-bearing deposits.



Large spodumene crystals are found on the Project.



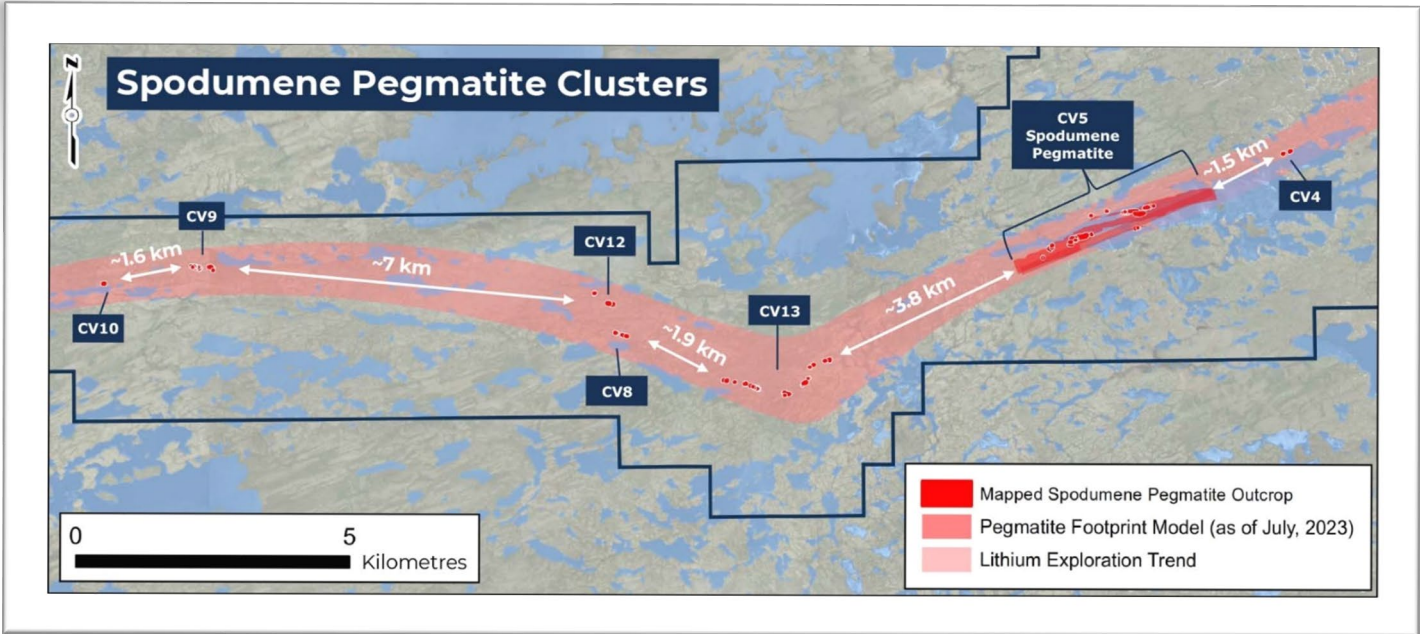
Location of the Corvette Project: Trapline CH39 (Cree Nation of Chisasibi), Eeyou Istchee James Bay Territory, Québec, Canada





## EXPLORATION TREND

On the Corvette Project, there are multiple distinct clusters of lithium pegmatite outcrops identified.



## MINERAL RESOURCE ESTIMATE

Patriot published its first mineral resource estimate (MRE) in July, based on 163 drill holes for a total of 56,385 metres drilled. The MRE includes only the CV5 Spodumene Pegmatite (see News Releases section below).

**109.2 Mt at 1.42% Li<sub>2</sub>O, Inferred**  
**The largest lithium pegmatite in the Americas and 8<sup>th</sup> largest globally.**

**For more information consult the Patriot website**

 [Click here](#)



The technical information herein concerning the Corvette Property is based upon, and fairly represents, information compiled by Mr. Darren L. Smith, M.S.c., P.Geo., Vice President of Exploration for Patriot Battery Metals Inc., who is a Qualified Person as defined by National Instrument 43-101 – *Standards of Disclosure for Mineral Projects* and member in good standing with the Ordre des Géologues du Québec and the Association of Professional Engineers and Geoscientists of Alberta. Mr. Smith has reviewed and approved the technical information herein.

# Mining 101

## WHAT IS LITHIUM?

### Why does lithium matter?



### WHAT IT IS AND WHERE DOES IT COME FROM?

Lithium is a soft and silver-grey metal. In nature, it is never found as a pure metal.

There are three main sources of lithium:

#### Hard Rocks (pegmatite)

- ◆ ±49% of the global production.
- ◆ Most of it is mined as rock minerals in Australia.
- ◆ Less than 1% is produced in North America.

#### Brines

- ◆ Remaining ±51% of the current worldwide production.
- ◆ Significant quantities are produced from salar in Chile, Argentina and China.

#### Clays

- ◆ No commercial production yet.



At the Corvette Project, the exploration activities for lithium are focused on a rock called spodumene pegmatite.

Photo courtesy of Dahrouge Geological Consulting



**As the world searches for cleaner sources of energy to help reduce the impacts of climate change, lithium offers numerous opportunities especially as a replacement for fossil fuels in transportation.**

### LITHIUM IN YOUR DAY-TO-DAY LIFE

Lithium possesses unique properties which make it useful in a wide range of essential applications, among them:



**Rechargeable batteries for electric vehicles**



**Medicine to treat depression, mania and bipolar disorder**



**Ceramics and glass**



**Non-rechargeable batteries for watches and smoke alarms**



**Air cleaner, cooling & drying air**



**Alloys reducing the weight of aircraft & vehicles**

#### Lithium Consumption



**Online Resource**

**The Lithium Voice, Volume 2, 2023**

[Click here](#)



# Mining 101

## MINING CYCLE

Exploration is the first stage

### MINERAL EXPLORATION

Mining is a temporary land use activity. There are interconnected stages that can span 30 years or more.

Mineral exploration is the first stage. The objective of this stage is to search for mineral deposits, a new source of useful metal or mineral.

Each stage needs to be successful to discover a deposit and turn it into a mine. It requires increasing investment at each stage. Most of the projects will only reach limited exploration.

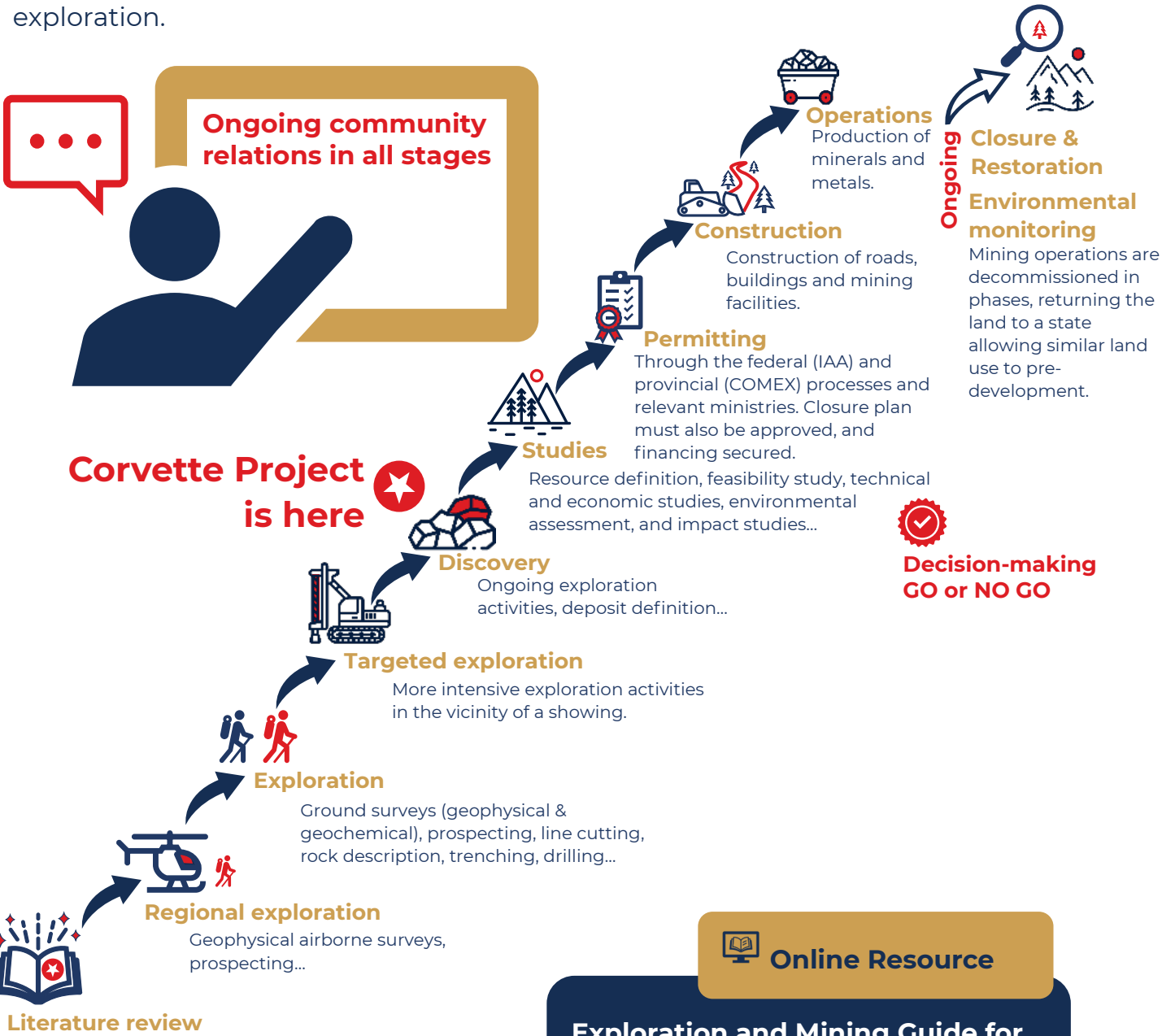
### SUCCESS RATE



Approx. 1/10,000  
“grassroots projects”  
reach development <sup>1</sup>

Approx. 1/200  
“discoveries” advance  
to development <sup>1</sup>

<sup>1</sup> Minerals & Petroleum Resources Directorate, 2007



Online Resource

Exploration and Mining Guide for  
Aboriginal Communities



[Click here](#)





# Community

## PARTICIPATION

### Events & Contributions

#### COMMUNITY INFORMATION EVENTS



Alix presenting the Corvette Project, February 2023, CNC Auditorium

Since the beginning of the year, Patriot has had more than 50 communications activities with Cree Nation of Chisasibi leadership, community members and the tallyman family.

#### UPCOMING EVENTS

**World Café Open House in October in Chisasibi community.** Discussion topics include: community employment and participation, winter birds and large mammal survey results and a Project update.

#### COMMUNITY MEMBERS PARTICIPATING IN THE CORVETTE PROJECT



Photos courtesy of Dahrouge Geological Consulting, Fusion Drilling and Niigaan

#### NATIONAL DAY OF TRUTH & RECONCILIATION

On September 30, Patriot invited employees and partners to learn about the legacy of residential schools and offered a variety of sources to learn about First Nations, Inuit and Métis culture.



Patriot is proud to help financially rebuild the sweat lodge in preparation for the November community gathering.

**SEPT 30**

**National Day of Truth & Reconciliation**

The purpose of the National Day of Truth and Reconciliation is to recognize the dark legacy of residential schools, the missing children and the survivors of these institutions.

We invite you to start your learning journey by exploring the diversity and richness of First Nations, Inuit and Métis cultures.

Here are a few suggestions to get you started.

**Algonquian Linguistic Atlas**

This free, easy-to-use online tool lets you learn phrases and words in several native languages, including Cree. You can even listen to audio excerpts from Chisasibi.

Atlas

**Favorite suggestions from the AKI/ĀE KIKEATAMOSIA magazine by UQAT**

For suggestions on movies, TV series, documentaries, podcasts, books and more.

UQAT Magazine

Take a look at some of the books available.

TSXV: PMET | ASX: PMT | OTCQX: PMETF | FWB: R9GA

6



# News Releases

## HIGHLIGHTS

### from last quarter

To access all Patriot Battery Metals news releases please visit <https://patriotbatterymetals.com/news/>

 [Click on the titles to read more](#)

July 4, 2023	<b>PATRIOT ACHIEVES 6% LI2O SPODUMENE CONCENTRATE GRADE IN PRELIMINARY HLS METALLURGICAL TESTWORK ON THE CV13 PEGMATITE INDICATING POTENTIAL FOR JOINT PROCESSING WITH CV5</b>
July 10, 2023	<b>PATRIOT BATTERY METALS RESPONDS TO SHORT REPORT</b>
July 10, 2023	<b>PATRIOT ANNOUNCES FINAL CORE ASSAY RESULTS FROM ITS 2023 WINTER DRILL PROGRAM, INCLUDING 108.0 M AT 2.44% LI2O, AT THE CV5 PEGMATITE, CORVETTE PROPERTY, QUEBEC, CANADA</b>
July 26, 2023	<b>PATRIOT PROVIDES OPERATIONAL UPDATE FOR THE CORVETTE PROPERTY, QUEBEC, CANADA</b>
July 30, 2023	<b>PATRIOT ANNOUNCES THE LARGEST LITHIUM PEGMATITE RESOURCE IN THE AMERICAS AT CV5, CORVETTE PROPERTY, QUEBEC, CANADA</b>
July 31, 2023	<b>PATRIOT BATTERY METALS ANNOUNCES A C\$109 MILLION STRATEGIC INVESTMENT AND MEMORANDUM OF UNDERSTANDING WITH ALBEMARLE CORPORATION</b>

#### HIGHLIGHTS



**CV5 Spodumene Pegmatite is firmly established as the largest lithium pegmatite mineral resource in the Americas and the 8<sup>th</sup> largest globally.**

August 2, 2023	<b>INVESTOR UPDATE CONFERENCE CALL</b>
August 3, 2023	<b>PATRIOT BATTERY METALS ANNOUNCES CLOSING OF A C\$109 MILLION STRATEGIC INVESTMENT WITH ALBEMARLE CORPORATION</b>
August 11, 2023	<b>PATRIOT RECEIVES BEST EMERGING COMPANY AWARD AT DIGGERS &amp; DEALERS MINING FORUM IN AUSTRALIA</b>
August 20, 2023	<b>PATRIOT PROVIDES OPERATIONS UPDATE FOR ITS CORVETTE PROPERTY, QUEBEC, CANADA</b>
August 28, 2023	<b>PATRIOT PROVIDES DRILL PROGRAM UPDATE AT ITS CORVETTE PROPERTY, QUEBEC, CANADA</b>





# News Releases

## HIGHLIGHTS

from last quarter



**Patriot receiving the 2023 Best Emerging Company Award at the Diggers and Dealers Mining Forum in Kalgoorlie, Australia**

Sept. 6, 2023	<b>PATRIOT ANNOUNCES INCLUSION IN THE S&amp;P/ASX 300 INDEX</b>
Sept. 8, 2023	<b>PATRIOT FILES NI 43-101 TECHNICAL REPORT ON THE CV5 MINERAL RESOURCE ESTIMATE, CORVETTE PROPERTY, QUEBEC, CANADA</b>
Sept. 13, 2023	<b>PATRIOT BATTERY METALS ANNOUNCES AMENDMENTS TO SHAREHOLDER MEETING MATTERS</b>
Sept 19, 2023	<b>RESULTS OF ANNUAL GENERAL AND SPECIAL SHAREHOLDER MEETING</b>
Sept 24, 2023	<b>PATRIOT EXTENDS STRIKE LENGTH TO 4.35 KM AT THE CV5 SPODUMENE PEGMATITE, CORVETTE PROPERTY, QUEBEC, CANADA</b>

**SIGN UP FOR NEWS ALERTS**

 [www.patriotbatterymetals.com/news-alerts/](http://www.patriotbatterymetals.com/news-alerts/)







# Contact Info

GET IN TOUCH

We welcome your feedback

## MONTREAL OFFICE

1801, McGill College, Suite 900, Montréal, Québec, Canada, H3A 1Z4

1 (604) 279-8709



[www.patriotbatterymetals.com](http://www.patriotbatterymetals.com)

## FOLLOW US



PatriotBatteryMetals



patriot-battery-metals



Patriot\_Battery

Èva Roy-Vigneault

Principal Community Relations & ESG



[eroy@patriotbatterymetals.com](mailto:eroy@patriotbatterymetals.com)

## DISCLOSURE

### Statement

**DISCLAIMER FOR FORWARD-LOOKING INFORMATION** This newsletter contains certain statements, which may constitute “forward-looking information” within the meaning of Canadian and Australian securities law requirements. Forward-looking information involves statements that are not based on historical information but rather relate to future operations, strategies, financial results or other developments. Forward-looking information is necessarily based upon estimates and assumptions, which are inherently subject to significant business, economic and competitive uncertainties and contingencies, many of which are beyond the control of Patriot Battery Metals Inc. (the Company) and many of which, regarding future business decisions, are subject to change. These uncertainties and contingencies can affect actual results and could cause actual results to differ materially from those expressed in any forward-looking statements made by or on behalf of the Company. Although the Company has attempted to identify important factors that could cause actual actions, events or results to differ materially from those described in forward-looking information, there may be other factors that cause actions, events or results to differ from those anticipated, estimated or intended. All factors should be considered carefully, and readers should not place undue reliance on the Company’s forward-looking information. Examples of such forward-looking information within this newsletter include statements relating to the future development of the business and assets of the Company, including the environmental management of site activities, community relations and environmental, social and governance commitments. Generally, forward-looking information can be identified by the use of forward-looking terminology such as “expects,” “estimates,” “anticipates,” or variations of such words and phrases (including negative and grammatical variations) or statements that certain actions, events or results “may,” “could,” “might” or “will” occur.

Forward-looking statements are not guarantees of future performance and involve risks, uncertainties and assumptions, which are difficult to predict. Assumptions underlying the Company’s expectations regarding forward-looking statements or information contained in this newsletter include, among others, the Company’s ability to comply with applicable governmental regulations and standards, its success in implementing its strategies, achieving its business objectives, the ability to raise sufficient funds from equity financings in the future to support its operations, and general business and economic conditions. The foregoing list of assumptions is not exhaustive. Prospective investors reading this newsletter are cautioned that forward-looking statements are only predictions, and that the Company’s actual future results or performance are subject to certain risks and uncertainties including, but not limited to: risks related to the Company’s mineral properties being subject to prior unregistered agreements, transfers or claims and other defects in title; risks related to the Company’s history of losses, which may continue in the future; risks related to increased competition and uncertainty related to additional financing that could adversely affect its ability to attract necessary capital funding or obtain suitable properties for mineral exploration in the future; risks related to mineral resource estimates based on inferred resources, which are not mineral reserves and have no demonstrated economic viability; risks related to its officers and directors becoming associated with other natural resource companies, which may give rise to conflicts of interest; uncertainty and volatility related to stock market prices and conditions; further equity financing(s), which may substantially dilute the interests of the Company’s shareholders; risks relating to its exploration operations; dependence on general economic, market or business conditions; changes in business strategies; environmental risks and remediation measures; and changes in laws and regulations. Readers are directed to carefully review the detailed risk discussion in the Company’s most recent Annual Information Form filed under Patriot Battery Metals Inc.’s profile on SEDAR+ (<https://www.sedarplus.ca/landingpage/>) for a fuller understanding of the risks and uncertainties that affect the Company.

