



COMMUNITY NEWSLETTER

October 2024

MESSAGE FROM John Drapack Director Studies

ADDING EXPERIENCE TO THE TEAM!

Last June, I joined Patriot as the Director of Studies. I am happy to share my experience in studying, planning and executing major mining Projects, including open pit and underground operations as well as infrastructure development.

In my first months of work, my main goal was to help the Company complete and publish a Preliminary Economic Assessment (PEA) Report for the Shaakichiuwaanaan Project. The PEA effort, the on-going ESIA baseline studies, in combination with the discussions with Chisasibi community members and land users done by the ESG department, created a high-level potential design of the future mine. In the Fall 2023, Patriot was envisioning a full open pit operation at Shaakichiuwaanaan. Based on the concern raised on the impact of this mining approach on the Shaakichiuwaanaan Lake and fish habitat, Patriot assessed a new strategy: the development of an underground mine and an open pit at the same time (named the "Hybrid Option"). This hybrid mining approach results in a significant reduction (approximately half of the area) of the encroachment of the project on the Shaakichiuwaanaan Lake.

The next step for me, is to work with our different consultants and partners to complete a NI 43-101 Feasibility Study for the Project in 2025. I will work closely with the ESG team to include the input from our local stakeholders to improve the design of the Project, so it can better fit in the existing environment and be beneficial to the socio-economic development of the Eeyou Istchee James Bay region.

Regards,

John Drapack

IN THIS NEWSLETTER

1. Message from the Director Studies
2. Update on the Shaakichiuwaanaan Project
3. Mining 101: MRE & Infilling Drilling
4. Community Participation
5. News Releases from Last Quarter



John Drapack
Director Studies

SHAAKICHIUWAANAAN

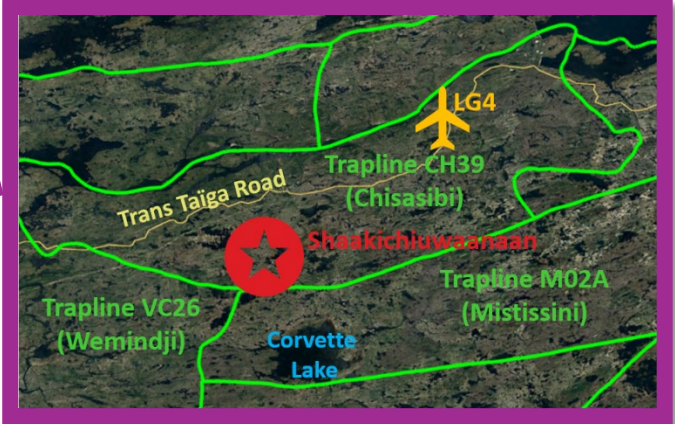
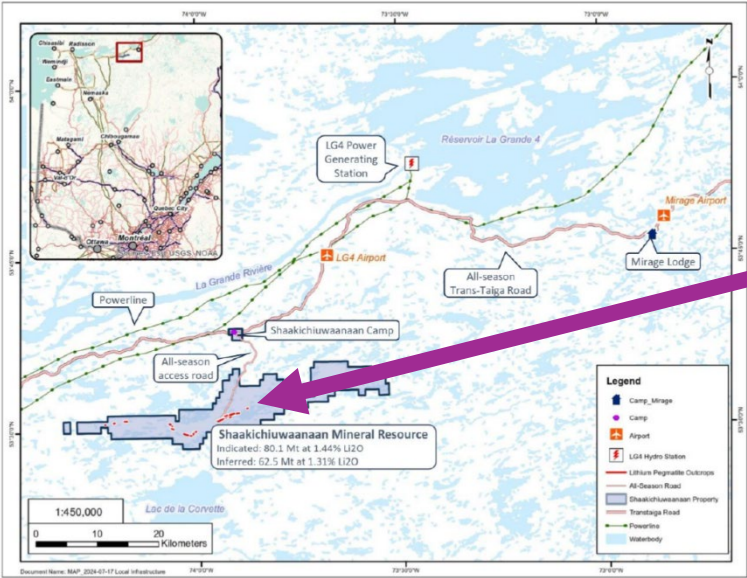
Hard Rock Lithium

In Eeyou Istchee James Bay



LOCATION

Located within the Eeyou Istchee James Bay territory, on trapline CH39 of the Cree Nation of Chisasibi, the Shaakichiuwaanaan Project hosts significant lithium-bearing mineralization.



WHAT IS LITHIUM?

Lithium is a soft and silver-grey metal. In nature, it is never found as a pure metal. At the Shaakichiuwaanaan Project, the exploration activities are focused on a rock called pegmatite. A rock is composed of different minerals and spodumene is a type of mineral. The lithium is an element contained in the mineral called spodumene.



CV5 Outcrop
Rock: pegmatite



CV5 Outcrop
Close-up (~20% spodumene)

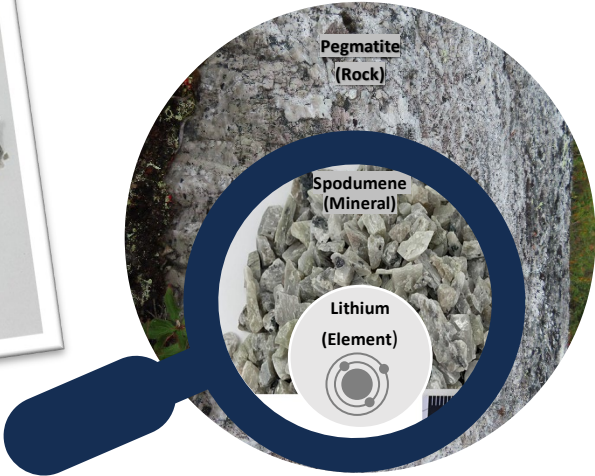


Spodumene

CV5 Outcrop
Pegmatite (cut sample)



CV5
Spodumene Concentrate



SHAAKICHIUWAANAAN

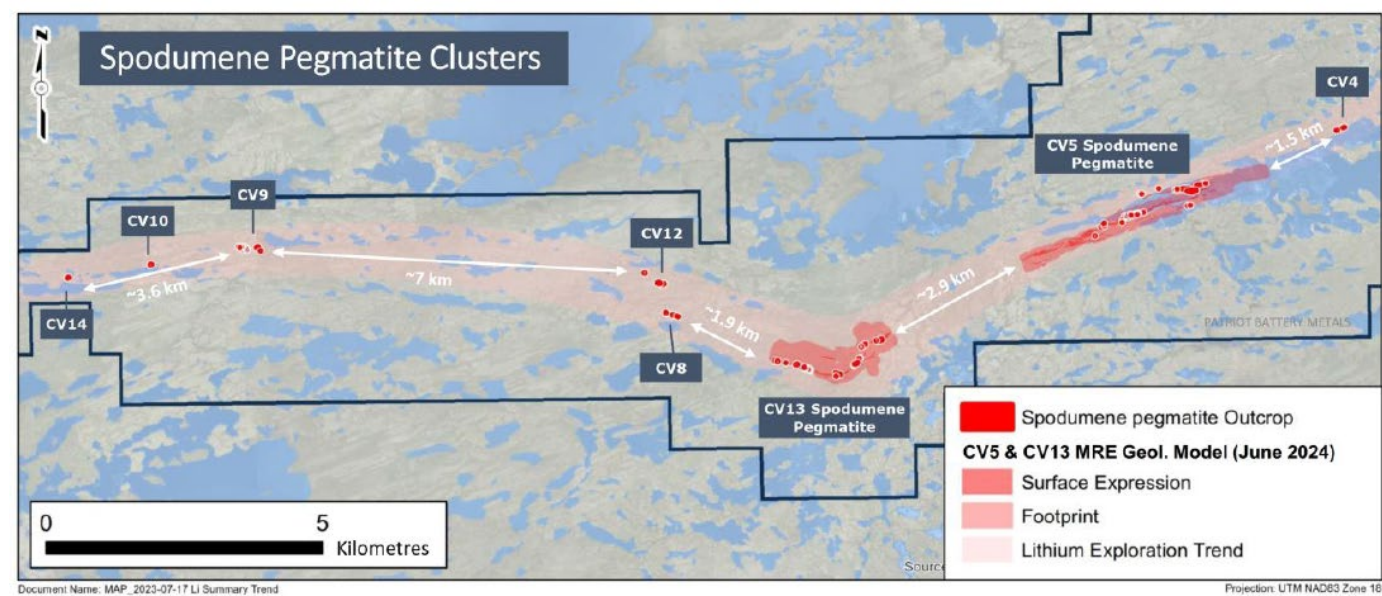
Hard Rock Lithium

In Eeyou Istchee James Bay



MINERAL RESOURCE ESTIMATE (MRE)

Patriot updated the MRE in August 2024. The new MRE now includes the CV5 & CV13 spodumene pegmatites whereas the maiden MRE announced in 2023 included only CV5.



Lithium pegmatite clusters at Shaakichiuwaanaan

HIGHLIGHTS

- Largest lithium pegmatite Mineral Resource in the Americas and the 8th largest globally.
- 80.1 Mt at 1.44% Li₂O and 163 ppm Ta₂O₅ Indicated, and
- 62.5 Mt at 1.31% Li₂O and 147 ppm Ta₂O₅, Inferred.

For more information on the MRE consult Patriot’s website and refer to press release dated August 5, 2024

[Click here](#)

	Pegmatite	Classification	Tonnes (Mt)	Li ₂ O (%)	Ta ₂ O ₅ (ppm)	Contained Li ₂ O (Mt)	Contained LCE (Mt)
Included in the PEA	CV5	Indicated	78.6	1.43%	162	1.13	2.79
		Inferred	43.3	1.25%	161	0.54	1.34
Not included in the PEA	CV13	Indicated	1.5	1.62%	195	0.02	0.06
		Inferred	19.1	1.46%	115	0.28	0.69

Shaakichiuwaanaan (CV5 & CV13) Mineral Resource Estimate (80.1 Mt at 1.44% Li₂O and 163 ppm Ta₂O₅ Indicated, and 62.5 Mt at 1.31% Li₂O and 147 ppm Ta₂O₅ ppm Inferred) is reported at a cut-off grade of 0.40% Li₂O (open-pit), 0.60% Li₂O (underground CV5), and 0.80% Li₂O (underground CV13) with an Effective Date of August 21, 2024 (through drill hole CV24-526). Mineral resources are not mineral reserves as they do not have demonstrated economic viability.

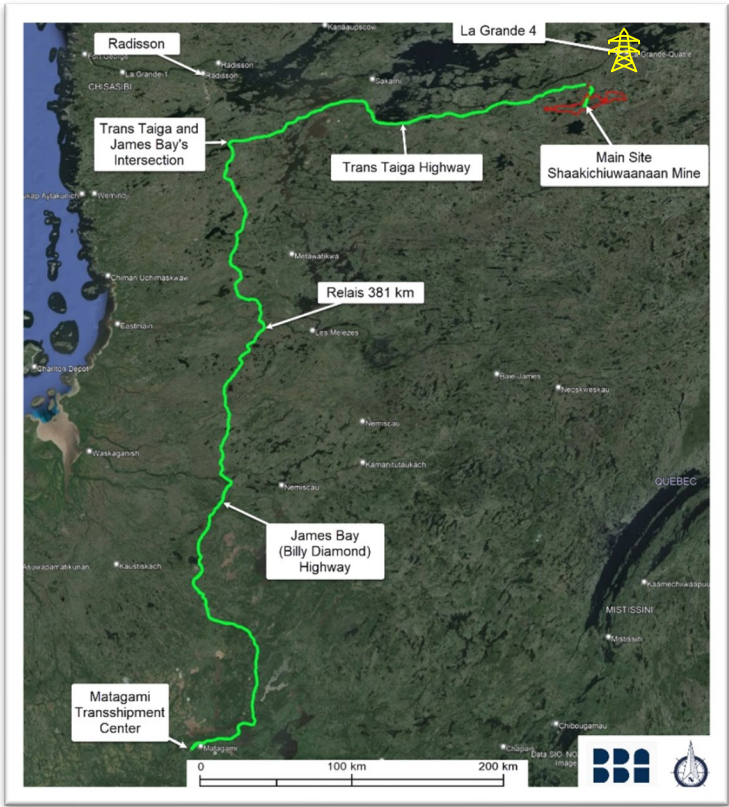
SHAAKICHIUWAANAAN Hard Rock Lithium In Eeyou Istchee James Bay



PRELIMINARY ECONOMIC ASSESSMENT (PEA)

The PEA includes only the CV5 Spodumene Pegmatite component of updated Shaakichiuwaanaan Mineral Resource Estimate.

The PEA envisions three main components for the project



1. The Shaakichiuwaanaan site
 - Mine (underground and open pit)
 - Process plant
 - Mine waste (rock & tailings) management facilities
 - Camp (estimated 500 workers)
2. A powerline to connect the Hydro-Québec Tilly substation to the Shaakichiuwaanaan site.
3. Transportation of the spodumene concentrate by trucks and trailers to the Matagami Transshipment Center (truck unloading and train loading facilities).

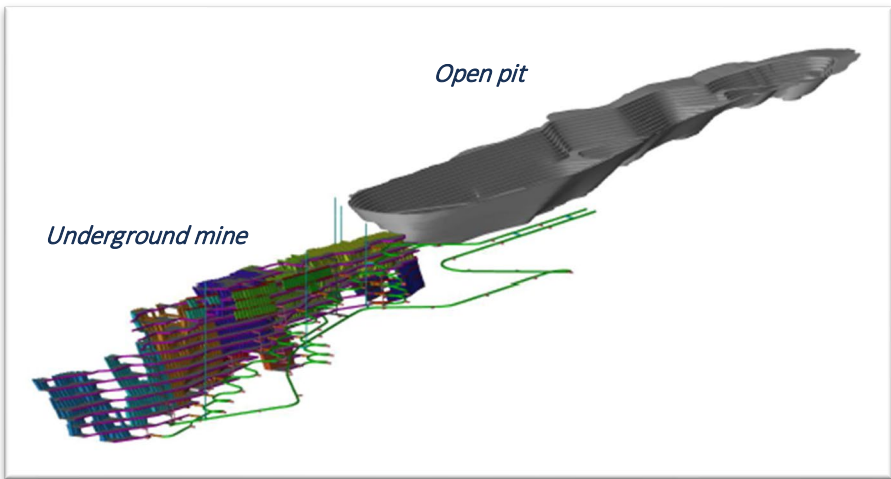
Project infrastructure location

Process Plant to Concentrate the Spodumene

The mineralized rock extracted from the mine will be processed on site using mechanical and physical properties. A crushing, dense media, and magnetic separation plant will concentrate the spodumene (containing lithium) into small pebble like material. No chemical reagents are required and tailings will be dry stacked.



Close-up of spodumene concentrate (DMS + non-magnetic fractions) 5.8% Li_2O and 0.60% Fe_2O_3 at 79% recovery.



Hybrid Mining Method

The hybrid mining method combines the development of an underground mine and an open pit at the same time.

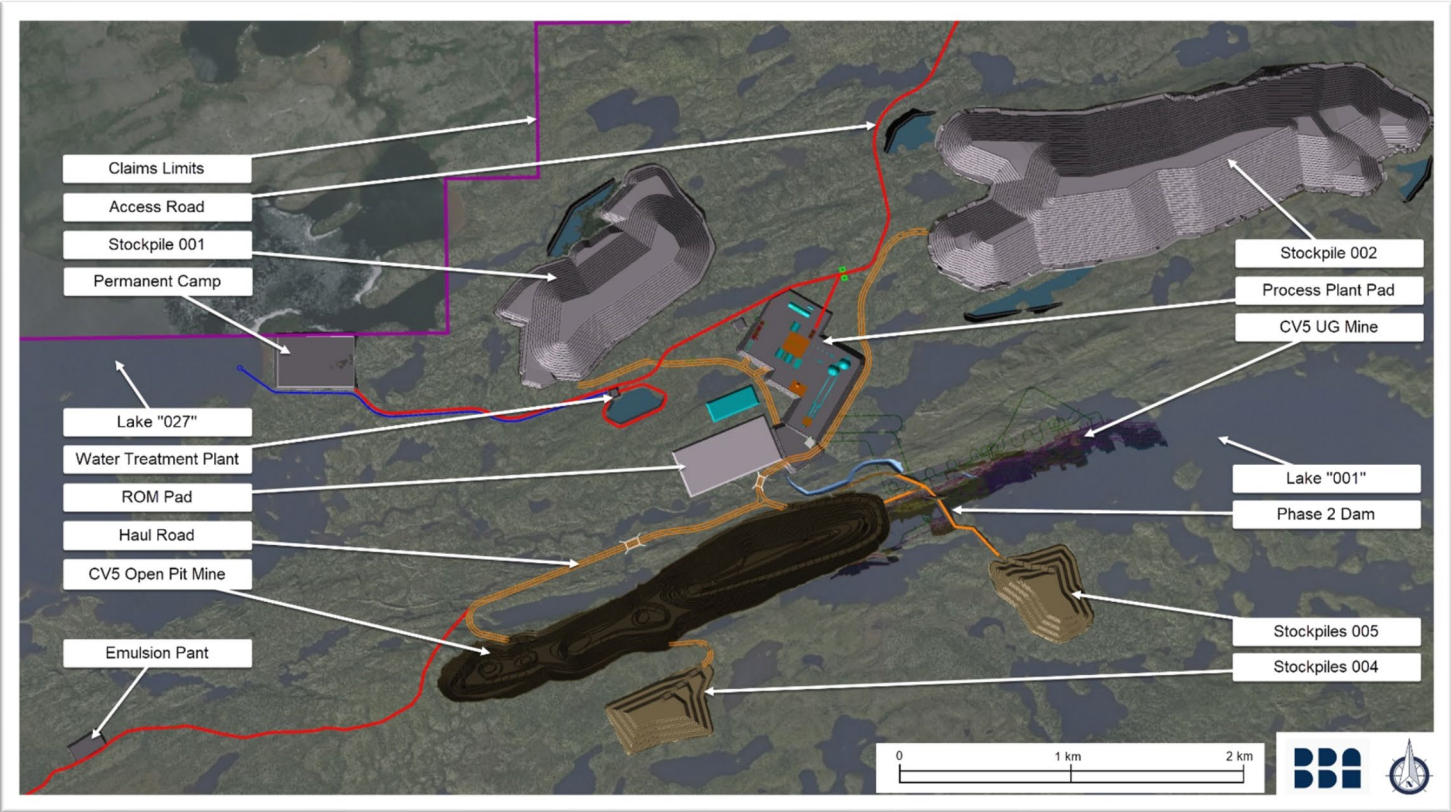
SHAAKICHIUWAANAAN

Hard Rock Lithium

In Eeyou Istchee James Bay



Preliminary Design for the Potential Mine



Main site infrastructure

The design of the potential mine may include the following:

- Open-pit mine
- Underground mine and portals
- Process plant (crusher buildings, crushed run-of-mine (ROM) domes, concentrator, loadout)
- Paste backfill plant
- Garages for the mining fleet, light vehicles, and highway trucks
- Administrative offices, dry rooms, warehouses, and auxiliary buildings for the concentrator and the mine areas
- Waste rock and rejects management facilities with their associated ditching and basin systems for water management
- Fresh/raw water wells and water treatment plants
- Electrical substation and overhead electrical powerlines
- Roads and pads with their associated ditching and culvert systems for drainage, and a bridge
- Aggregate crushing plant area
- Emulsion plant and explosive storage magazines buildings
- Laydown areas
- Fuel storage pad and refuelling stations
- ROM pads
- Water diversion dam on Lake 001 (Shaakichiuwaanaan Lake)
- Water diversion canal for Lake 001 (Shaakichiuwaanaan Lake)
- Permanent workers' camp for construction and operational needs.

Estimated Mine Life
24 years

Annual Production
Stage 1: ~400ktpa
Stage 2: ~800ktpa



The planning process is still underway. The Project has not yet been approved and some details will evolve or change.

MINING 101

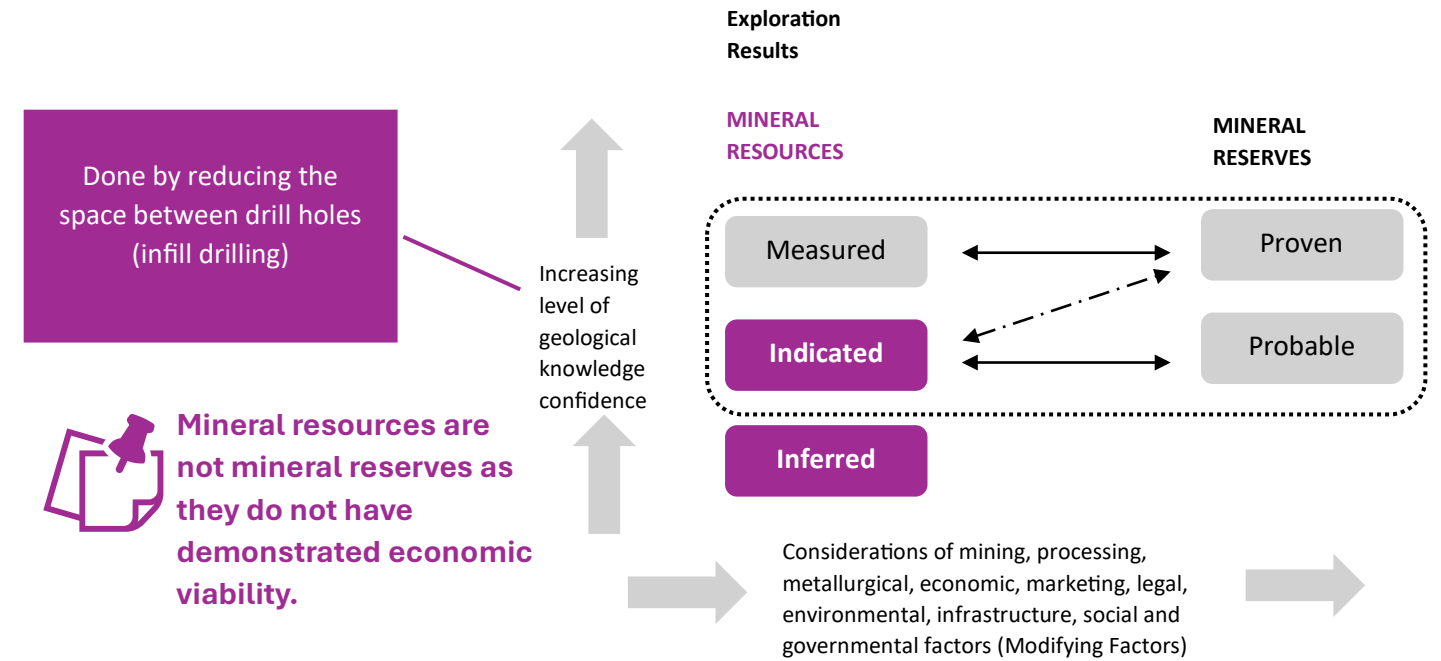
Mineral Resource Estimate

Infilling Drilling



MRE = Mineral Resource Estimate

A Mineral Resource is a natural concentration or occurrence of solid material (i.e. elements or minerals) of economic interest in the earth’s crust in such form, grade or quality, and quantity that there are reasonable prospects for eventual economic extraction. A MRE is based upon drill hole data in a regulated technical document and is the foundation for the next steps in exploration/development, such as the publication of a Preliminary Economic Assessment or a Feasibility Study.



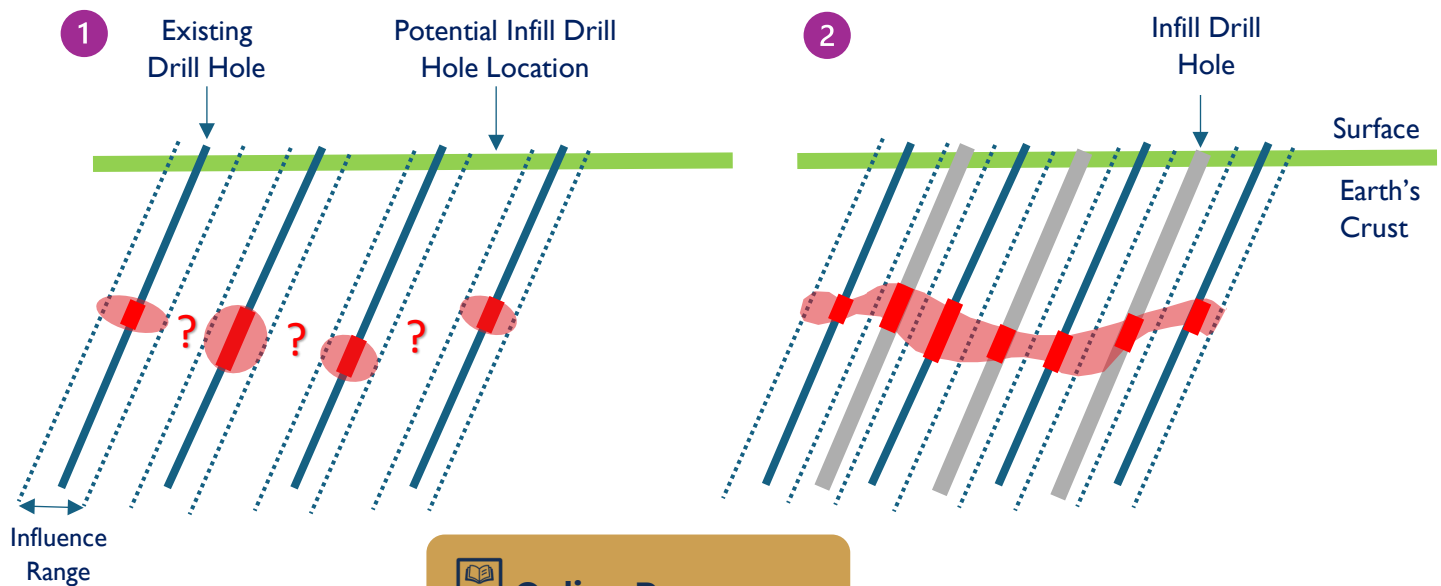
INFILL DRILLING

The main purpose of infill drilling is:

- to confirm the continuity of mineralization
- to adequately delineate mineralized bodies
- to convert inferred mineral resource estimate into indicated or measured categories



Infill drilling programs are used to confirm the presence of mineralization between existing drill holes.



Online Resource

CIM Definition Standards  [Click here](#)

911 Metallurgist  [Click here](#)

COMMUNITY Participation Events & Contribution



PATRIOT RENAMES THE CORVETTE PROJECT SHAAKICHIUWAANAAN

As proposed by the Chisasibi elders and members of the Tallyman’s family, Patriot is proud to announce the re-naming of the Corvette Project to the Shaakichiuwaanaan Project.

During several of the communications sessions with the Tallyman’s family and the community-at-large, the idea of renaming the Project was both suggested and discussed. A logo has been developed for the Project in collaboration with the Tallyman’s family, including symbols important to the Cree such as a goose, a teepee and Cree syllabics.



Photo looking north-west of CV5 showing the four hills – the basis of the word Shaakichiuwaanaan.

NATIONAL DAY OF TRUTH & RECONCILIATION

On September 30, Patriot encouraged all workers to:

- wear orange as a sign of solidarity
- learn about the history or residential schools and its impact
- learn and appreciate the richness of indigenous cultures.

Under the themes "I’m listening and learning" and "Every Child Matters" orange t-shirts were distributed and a variety of documentary sources were provided to the workers so they can began their learning journey.



Awareness activity for the workers at Shaakichiuwaanaan camp, September 30.

COMMUNITY LIAISON OFFICE

Since August, Patriot is renting an office space in the Commercial Center. Please feel free to visit our Community Liaison Coordinator, Edward Bearskin, to ask questions and provide feedback on our activities.



Community Liaison Office
Chisasibi Commercial Center (Second floor)
15 Maamuu Road, Suite 204A
P.O. box 179
Chisasibi, Québec
J0M 1E0



Edward Bearskin
Community Liaison Coordinator

COMMUNITY Participation Events & Contribution



COMMUNITY INFORMATION EVENTS

Since the beginning of 2024, Patriot has had more than 70 communications activities with the Cree Nation of Chisasibi leadership, community members and the tallyman’s family.

In August, Patriot participated at the invitation of the Cree Nation of Chisasibi to a session to present and consult the public about an Exploration Protocol on the Shaakichiuwaanaan Project. More than 40 community members attended in person and the event was broadcasted on the local radio.

In September, a World Café Information Session was held at the Inuit Complex to present the updated Mineral Resources Estimate and the Preliminary Economic Assessment of the Shaakichiuwaanaan Project. Following the presentation, the attendees were invited to talk about their concerns and raise their questions at each discussion table. At the end of the evening, a summary of the discussions was presented to all in attendance.

We also met with the tallyman family (CH39) to discuss the Shaakichiuwaanaan Project, their land use and traditional knowledge and how to enhance Cree participation in the studies and current activities.



*Consultation on the Exploration Protocol
Chisasibi Auditorium, August 2024.*



*Presentation and discussion tables at the World Café Session
Inuit Complex, September 2024.*



*Discussion with the tallyman family around a map of the trapline CH39
Inuit Complex, September 2024.*

WORKERS ON THE SITE

Since the beginning of the year, more than 100 First Nation people participated in the Shaakichiuwaanaan project. They are working on site mainly for:

- Fusion Drilling (drilling operations & civil works)
- Saskounan Construction (civil works)
- Dahrouge Geological Consulting (exploration activities)
- Domco (camp operation, janitorial and catering services)
- Niigaan (environmental inventories)



*Field inventories for the Environmental Baseline Studies are underway at Shaakichiuwaanaan Project
Elden Ratt-Sam participating in fish inventory, Summer 2024.*

NEWS RELEASES

Highlights

From last quarter



To access all Patriot Battery Metals news releases, please visit <https://patriotbatterymetals.com/news/>

 [Click on the titles to read more](#)

July 1, 2024	INVESTOR WEBINAR – 3 JULY 2024
July 2, 2024	BLAIR WAY TO RETIRE FROM HIS ROLE AS CHIEF OPERATING OFFICER
July 7, 2024	PATRIOT EXTENDS VEGA ZONE WITH STANDOUT INTERCEPTS INCLUDING 9.7 M AT 5.16% LI2O AND 35.3 M AT 2.40% LI2O
July 11, 2024	PATRIOT FILES PRELIMINARY BASE SHELF PROSPECTUS
July 24, 2024	PATRIOT FILES FINAL BASE SHELF PROSPECTUS
 July 31, 2024	PATRIOT RENAMES THE CORVETTE PROJECT SHAAKICHIUWAANAAN (SHAA-GI-CHI-WAA-NAAN) PROJECT
 August 5, 2024	SIGNIFICANT MINERAL RESOURCE UPGRADE AT SHAAKICHIUWAANAAN LITHIUM PROJECT TO UNDERPIN IMPENDING PEA
August 5, 2024	EXPLORATION TARGET FOR THE SHAAKICHIUWAANAAN LITHIUM PROJECT OUTLINES DISTRICT SCALE OPPORTUNITY, QUEBEC, CANADA
August 15, 2024	SENIOR MINING EXECUTIVE ALEX EASTWOOD TO JOIN PATRIOT BATTERY METALS
 August 21, 2024	PEA HIGHLIGHTS SHAAKICHIUWAANAAN PROJECT AS A POTENTIAL NORTH AMERICAN LITHIUM RAW MATERIALS SUPPLY BASE
August 21, 2024	PRELIMINARY ECONOMIC ASSESSMENT – INVESTOR WEBINAR
September 12, 2024	PATRIOT FILES PEA TECHNICAL REPORT FOR THE SHAAKICHIUWAANAAN PROJECT
September 18, 2024	RESULTS OF ANNUAL GENERAL MEETING OF SHAREHOLDERS

SIGN UP FOR NEWS ALERTS



www.patriotbatterymetals.com/news-alerts/

CONTACT INFO

Get in touch

We welcome your feedback



CHISASIBI OFFICE

📍 15 Maamuu Road, Suite 204A, Chisasibi, Québec, Canada, J0M 1E0

☎ 1 (514) 249-8656

MONTRÉAL OFFICE

📍 1801, McGill College, Suite 900, Montréal, Québec, Canada, H3A 1Z4

☎ 1 (604) 279-8709



www.patriotbatterymetals.com

Èva Roy-Vigneault

Principal Community Relations & ESG



eroy@patriotbatterymetals.com

Edward Bearskin

Community Liaison Coordinator



ebearskin@patriotbatterymetals.com

FOLLOW US



PatriotBatteryMetals



patriot-battery-metals



Patriot_Battery

DISCLOSURE Statement

DISCLAIMER FOR FORWARD-LOOKING INFORMATION This newsletter contains certain statements, which may constitute “forward-looking information” within the meaning of Canadian and Australian securities law requirements. Forward-looking information involves statements that are not based on historical information but rather relate to future operations, strategies, financial results or other developments. Forward-looking information is necessarily based upon estimates and assumptions, which are inherently subject to significant business, economic and competitive uncertainties and contingencies, many of which are beyond the control of Patriot Battery Metals Inc. (the Company) and many of which, regarding future business decisions, are subject to change. These uncertainties and contingencies can affect actual results and could cause actual results to differ materially from those expressed in any forward-looking statements made by or on behalf of the Company. Although the Company has attempted to identify important factors that could cause actual actions, events or results to differ materially from those described in forward-looking information, there may be other factors that cause actions, events or results to differ from those anticipated, estimated or intended. All factors should be considered carefully, and readers should not place undue reliance on the Company's forward-looking information. Examples of such forward-looking information within this newsletter include statements relating to the future development of the business and assets of the Company, including the environmental management of site activities, community relations and environmental, social and governance commitments. Generally, forward-looking information can be identified by the use of forward-looking terminology such as “expects,” “estimates,” “anticipates,” or variations of such words and phrases (including negative and grammatical variations) or statements that certain actions, events or results “may,” “could,” “might” or “will” occur.

Forward-looking statements are not guarantees of future performance and involve risks, uncertainties and assumptions, which are difficult to predict. Assumptions underlying the Company's expectations regarding forward-looking statements or information contained in this newsletter include, among others, the Company's ability to comply with applicable governmental regulations and standards, its success in implementing its strategies, achieving its business objectives, the ability to raise sufficient funds from equity financings in the future to support its operations, and general business and economic conditions. The foregoing list of assumptions is not exhaustive. Prospective investors reading this newsletter are cautioned that forward-looking statements are only predictions, and that the Company's actual future results or performance are subject to certain risks and uncertainties including, but not limited to: risks related to the Company's mineral properties being subject to prior unregistered agreements, transfers or claims and other defects in title; risks related to the Company's history of losses, which may continue in the future; risks related to increased competition and uncertainty related to additional financing that could adversely affect its ability to attract necessary capital funding or obtain suitable properties for mineral exploration in the future; risks related to mineral resource estimates based on inferred resources, which are not mineral reserves and have no demonstrated economic viability; risks related to its officers and directors becoming associated with other natural resource companies, which may give rise to conflicts of interest; uncertainty and volatility related to stock market prices and conditions; further equity financing(s), which may substantially dilute the interests of the Company's shareholders; risks relating to its exploration operations; dependence on general economic, market or business conditions; changes in business strategies; environmental risks and remediation measures; and changes in laws and regulations. Readers are directed to carefully review the detailed risk discussion in the Company's most recent Annual Information Form filed under Patriot Battery Metals Inc.'s profile on SEDAR+ (<https://www.sedarplus.ca/landingpage/>) for a fuller understanding of the risks and uncertainties that affect the Company.